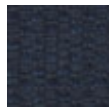


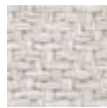


Gansevoort Lounge Chair

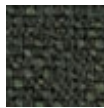
Gansevoort Lounge Chair



Medieval Blue Fabric



Birch Fabric



Bonsai Green Fabric

KEY FEATURES

- ▶ Rounded body features perfect seat and back pitch for superb comfort
- ▶ Luxurious European fabrics selected for exceptional feel
- ▶ Painted stainless legs wrapped in natural wood veneers and finished in brass feet

MATERIALS & ORIGIN

Fabric, Steel, Wood Veneer. Made in Brazil.

WEIGHT

55 lbs.

LINE DRAWING

