



Carey Bench



KEY FEATURES

- ▶ Constructed with a polished, stainless steel frame, seat two or more in real style
- ▶ Its canoe shaped seating is ergonomic comfort for the body and the eye
- ▶ Paired with crocco or natural hair, its elegant stitching is sturdy and attractive

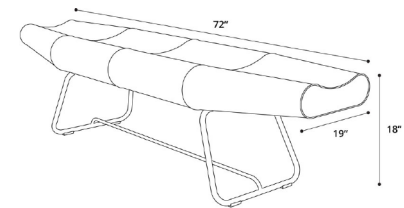
MATERIALS & ORIGIN

Carbon Steel, Reconstituted Leather. Made in Brazil.

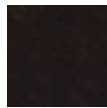
WEIGHT

52 lbs.

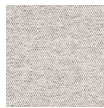
LINE DRAWING



White Crocco
Reclaimed Leather



Aged Cappuccino
Reclaimed Leather



Oatmeal Fabric

